

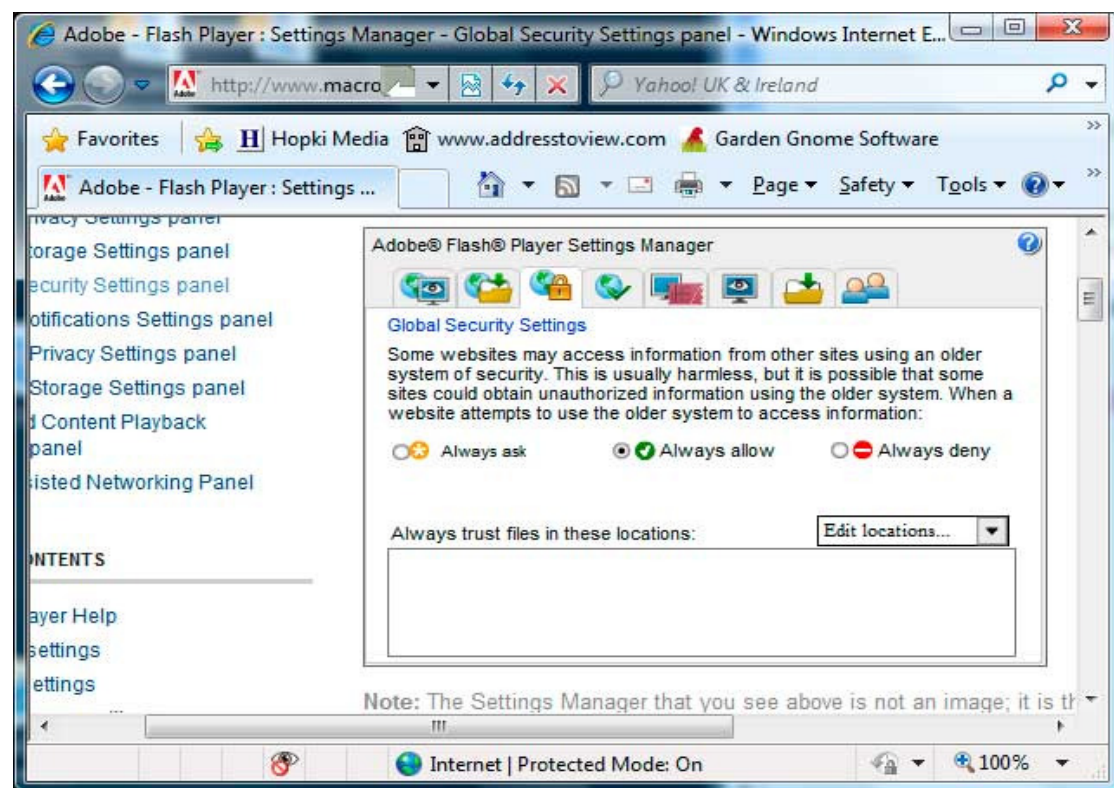
How to set global security settings.

The following steps guide you through how to set a folder or a hard drive to allow local and network access to your flash player.

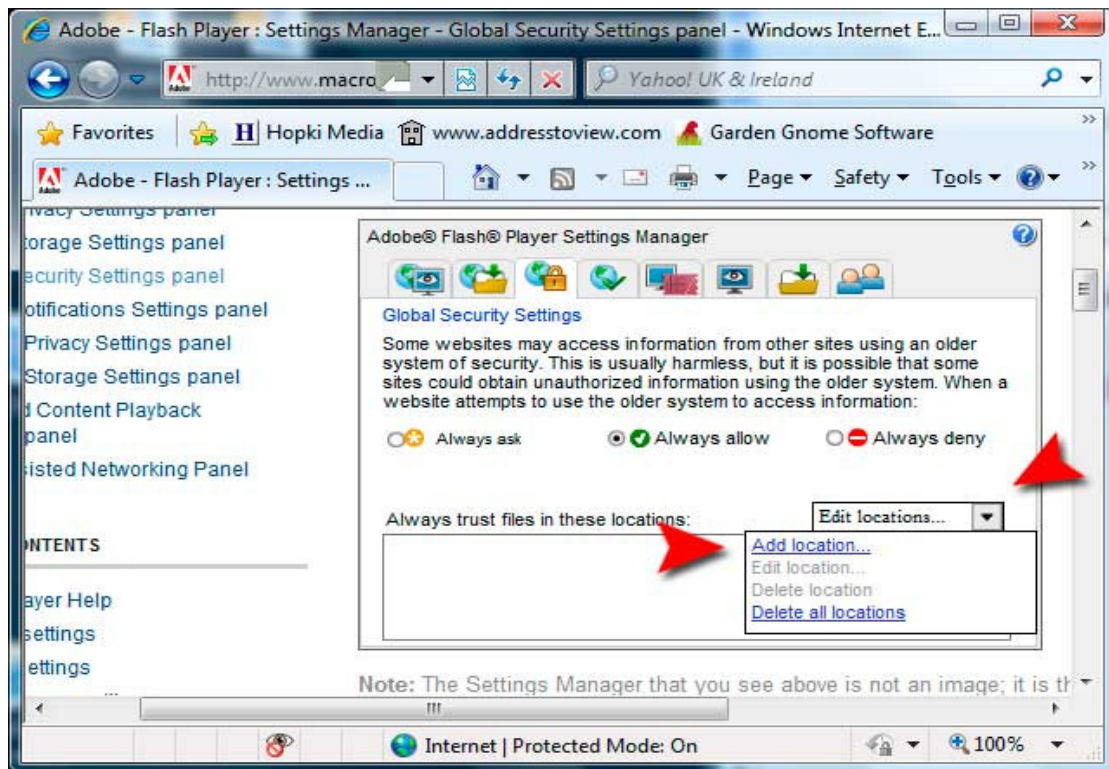
Select a location on your computer, in this case a folder on my desktop. I will also label it Test Folder.

Go to the flash player help website, the below link takes you directly to the Global Security Settings panel:

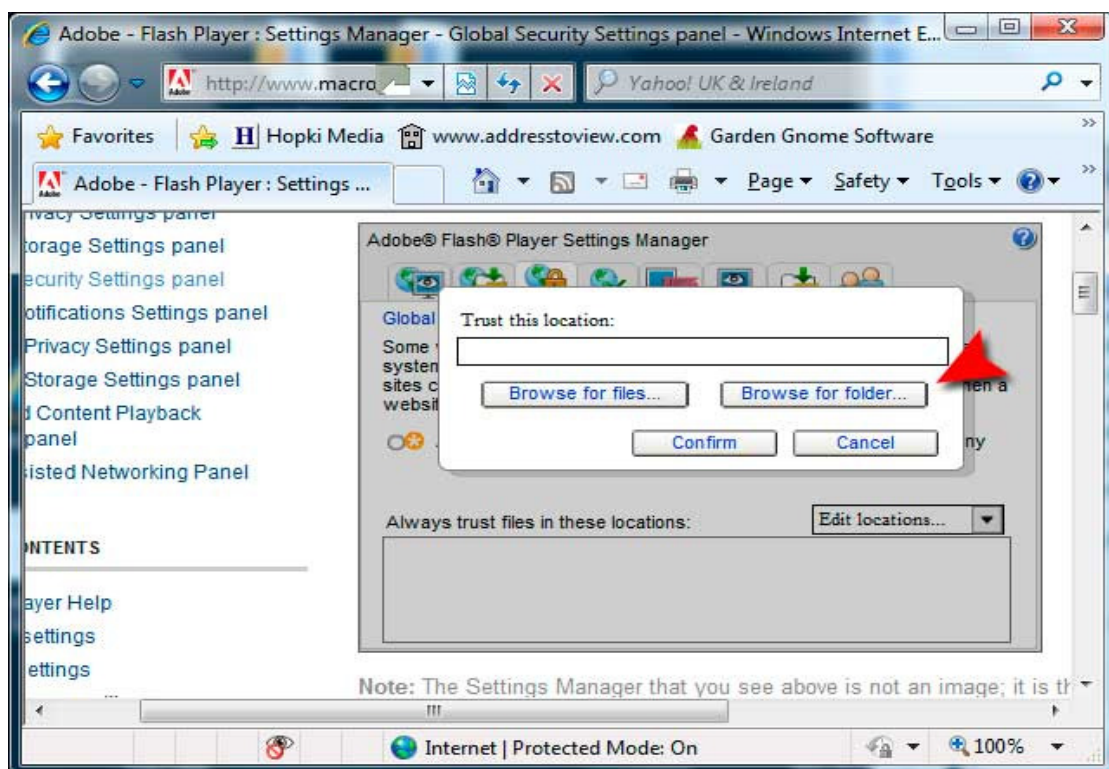
http://www.macromedia.com/support/documentation/en/flashplayer/help/settings_manager04.html



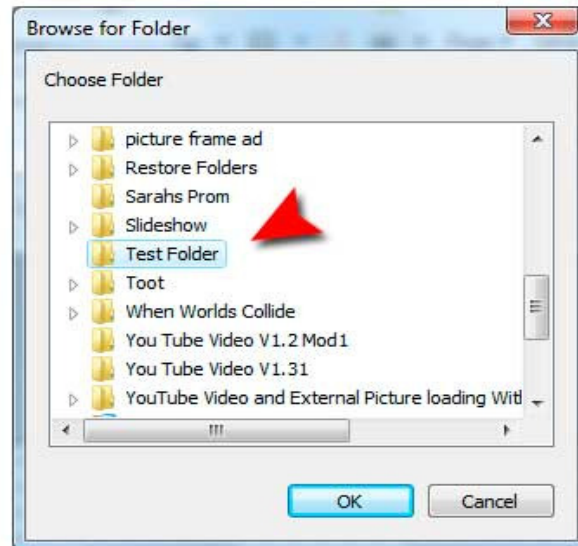
Click the drop down box then click Add Location.



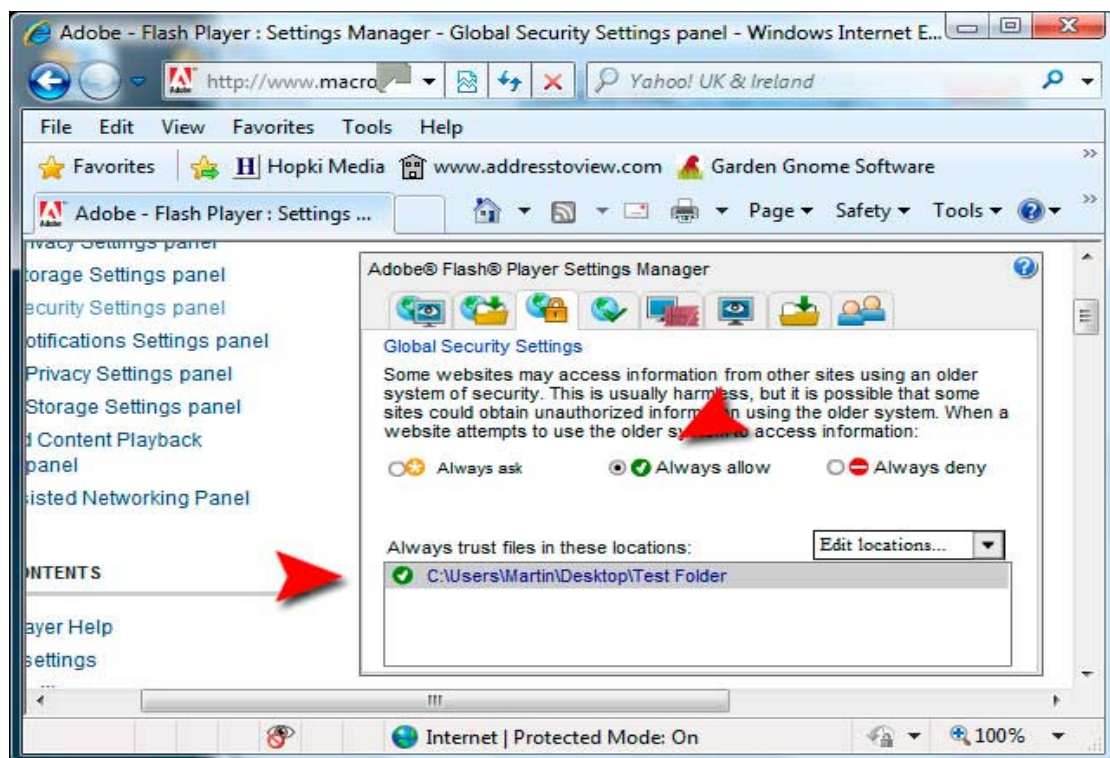
Click on Browse for folder.



Select the folder you made earlier and then click OK. Or you can select a one or all of your hard drives.



Make sure that the folder is in the list and that, Always allow is selected.



Then close the window. You can test all your panoramas or objects in this folder for correct operation.